



European  
Commission

# INSPIRE Directive

## EU implementation state-of-play and outlook



### Conférence **INSPIRE** France

16 novembre 2015

*«Le partage des données à l'épreuve de la réforme territoriale »*



Hugo.De-Groof@ec.europa.eu

European Commission

Directorate-General Environment

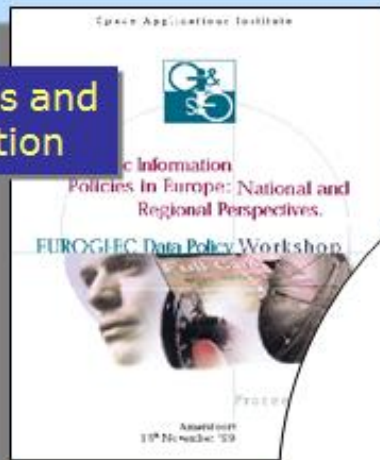
Governance, Reporting and Information Unit

# INSPIRE Components



European  
Commission

Data policies and  
co-ordination



Elevation



Spatial data

Meteo data

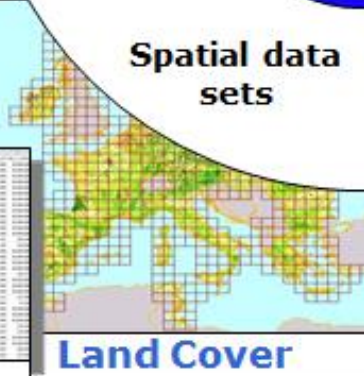


Catchments



Observations  
Statistics

Land Cover



Institutional  
framework

Technical  
standards

Spatial data  
sets

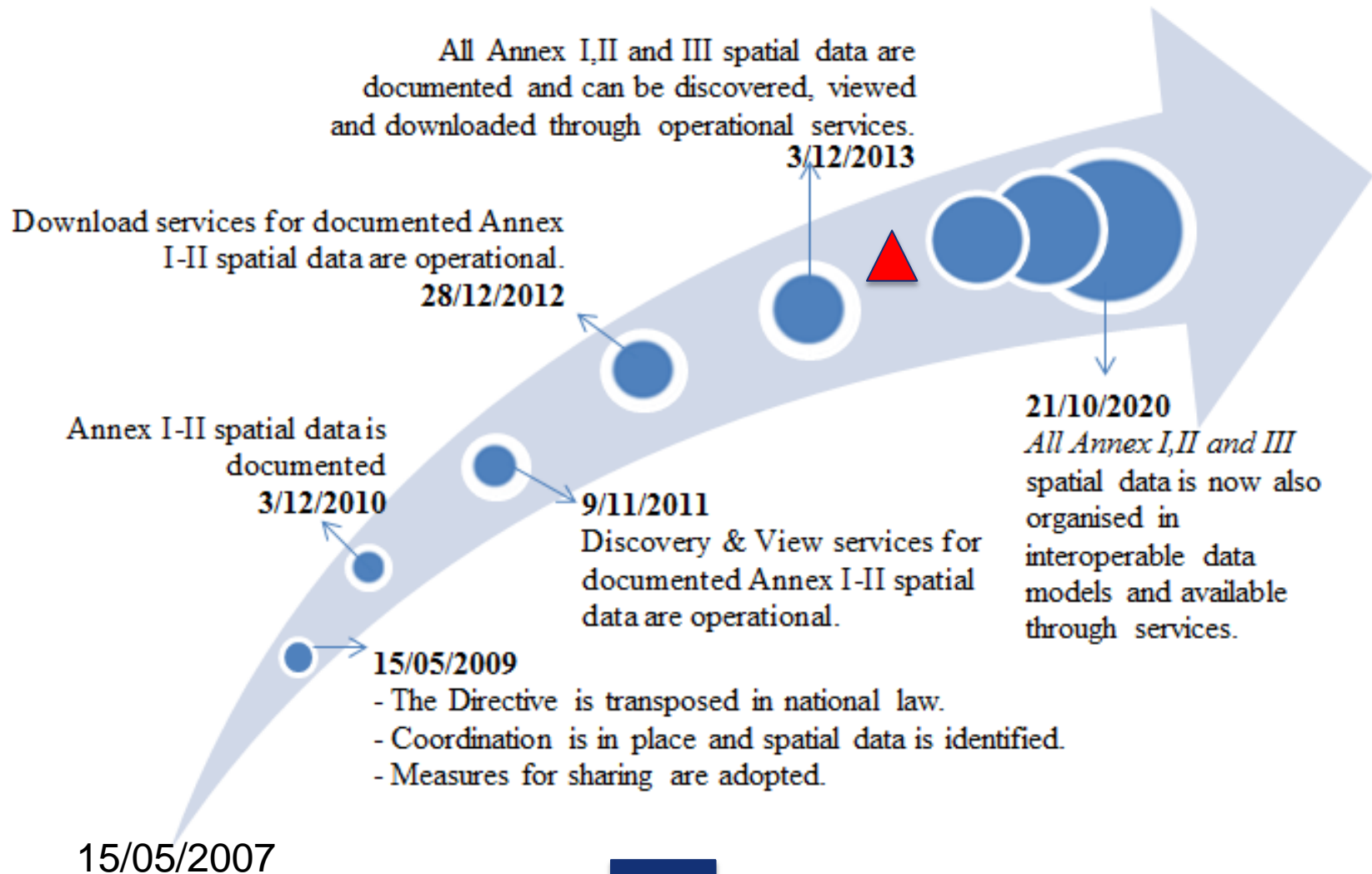
Spatial Data  
Services

Metadata  
Network services  
Discovery  
View  
Download  
Transform  
Invoke  
Spatial Data Standards



Data integration

# Implementation roadmap



## Effectiveness of MS Coordination

### Indicator – volume of spatial data sets

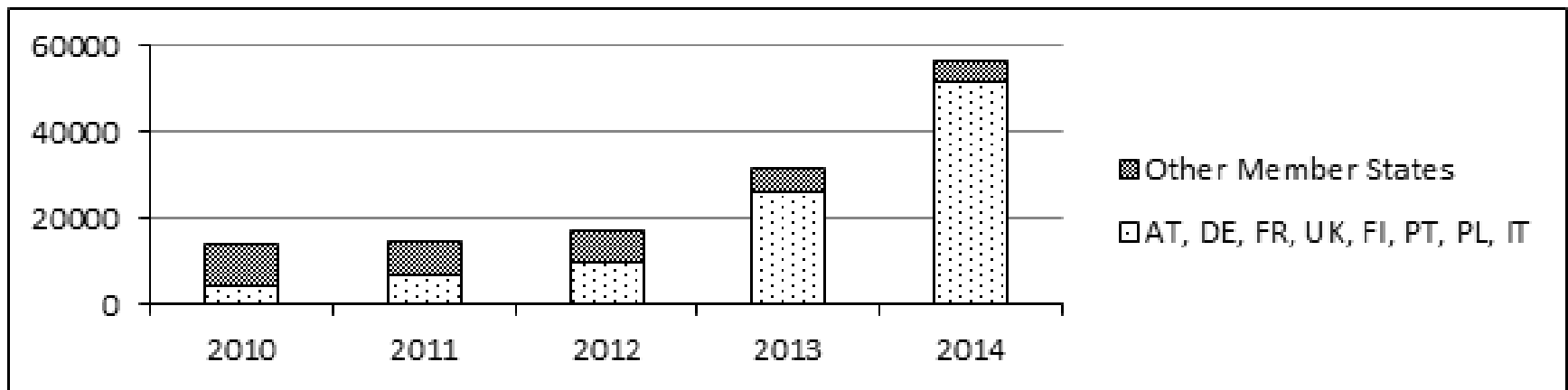


Figure 2: Total volume of spatial datasets reported by EU Member States.

Baseline: 2007 – 1400 data sets (24 countries)



## Effectiveness of MS Coordination

### Indicator – spatial data documented?

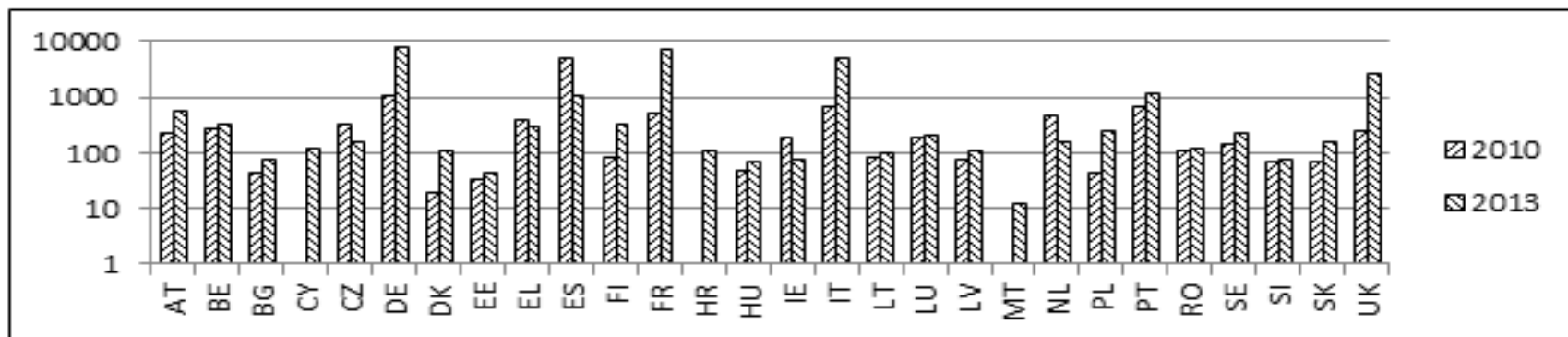


Figure 5: Evolution 2010-2013 – Volume of spatial data sets with metadata (logarithmic scale)

### Indicator – documentation conform?

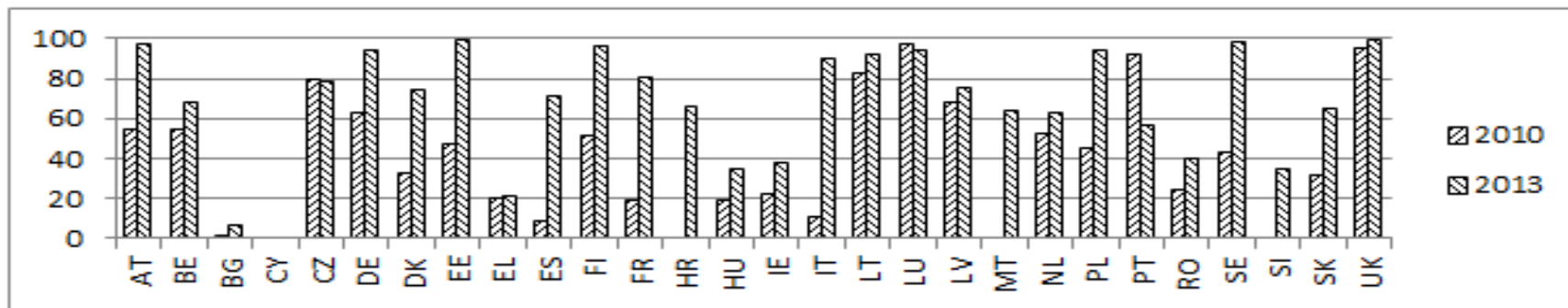


Figure 6: Evolution 2010-2013 - % of spatial data sets with conform metadata

## Effectiveness of MS Coordination

### Indicator – discovery service?

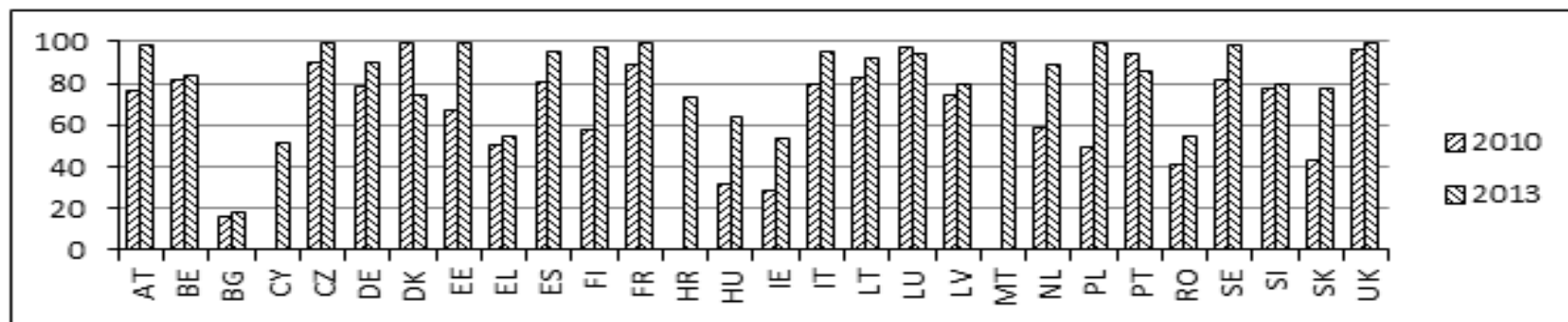


Figure 7: Evolution 2010-2013 - % of spatial data sets with discovery services

### Indicator – view service?

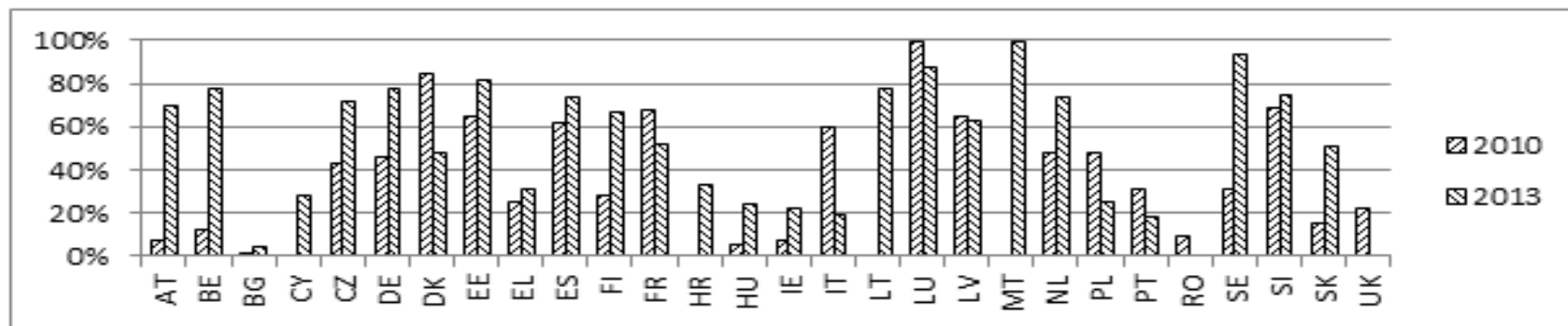


Figure 8: Evolution 2010-2013 - % of spatial data sets with view services

## Effectiveness of MS Coordination

### Indicator – download service?

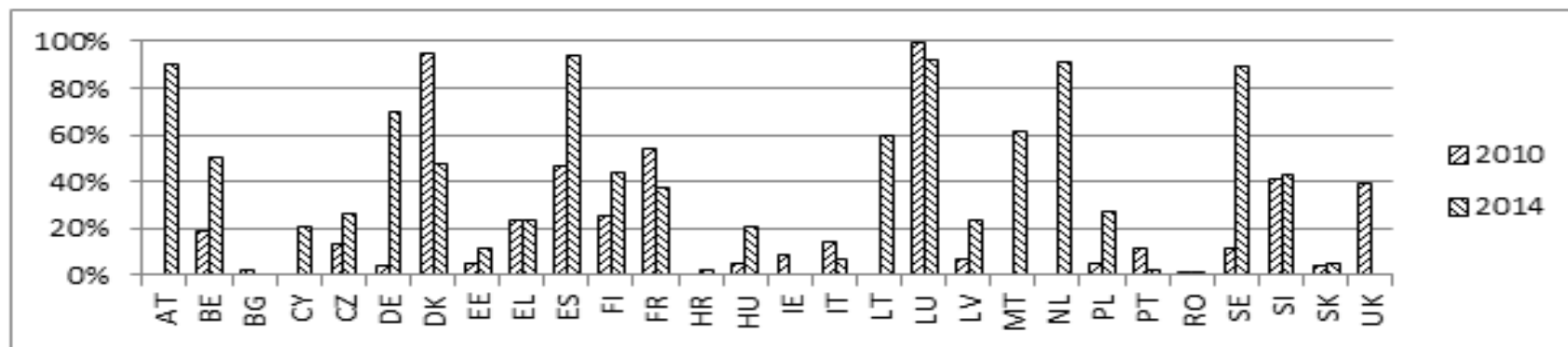


Figure 9: Evolution 2010-2013 - % of spatial data sets with download services

### Indicator (2017-20) – common data model?

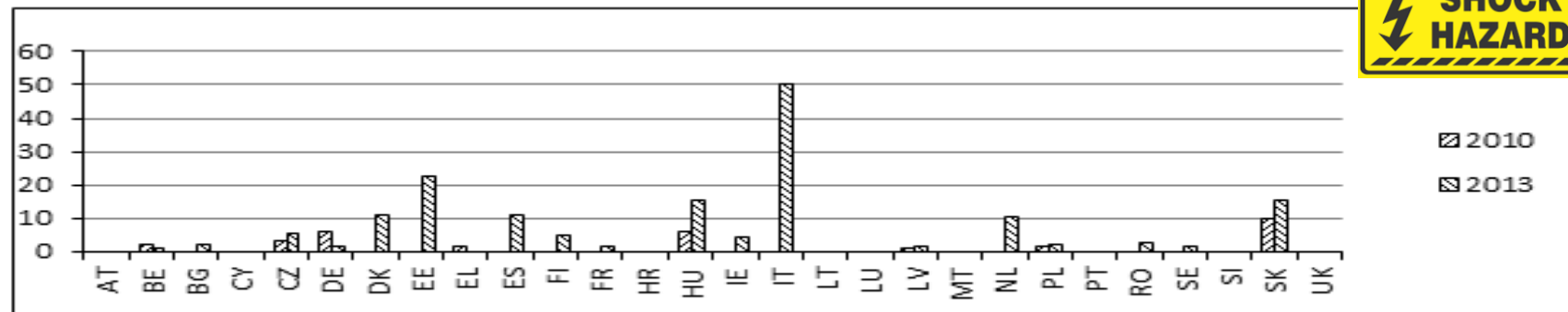


Figure 8: Evolution 2010-2013 - % of spatial data sets conform to common data models (all



## MDI:DE Marine Data Infrastructure (MDI-DE)



### INSPIRE at Sea

#### Annex I

- Coordinate reference systems
- **Geographical grid systems**
- **Geographical names**
- **Administrative units**
- Addresses
- Cadastral parcels
- **Transport networks**
- **Hydrography**
- **Protected sites**

#### Annex II

- **Elevation**
- **Land cover**
- **Orthoimagery**
- **Geology**

#### Annex III

- Statistical units
- **Buildings**
- **Soil**
- **Land use**
- Human health and safety
- **Utility and governmental services**
- **Environmental monitoring facilities**
- **Production and industrial facilities**
- **Agricultural and aquaculture facilities**
- **Population distribution — demography**
- **Area management/restriction/regulation zones and reporting units**
- **Natural risk zones**
- **Atmospheric conditions**
- **Meteorological geographical features**
- **Oceanographic geographical features**
- **Sea regions**
- **Bio-geographical regions**
- **Habitats and biotopes**
- **Species distribution**
- **Energy resources**
- **Mineral resources**





# Effectiveness of MS Coordination

## Indicator – thematic coverage

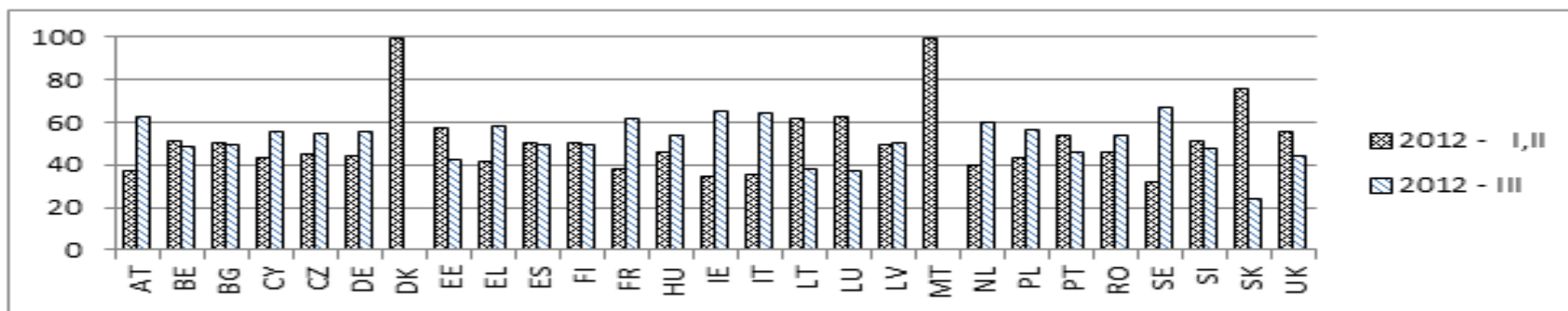


Figure 3: % of Annex I,II versus Annex III spatial data sets in 2012

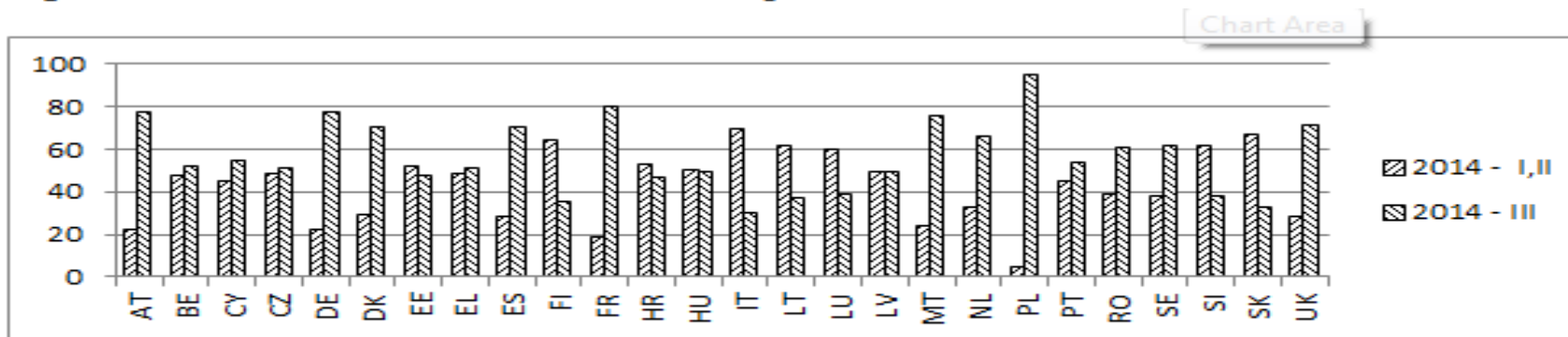


Figure 4: % of Annex I,II versus Annex III spatial data sets in 2014

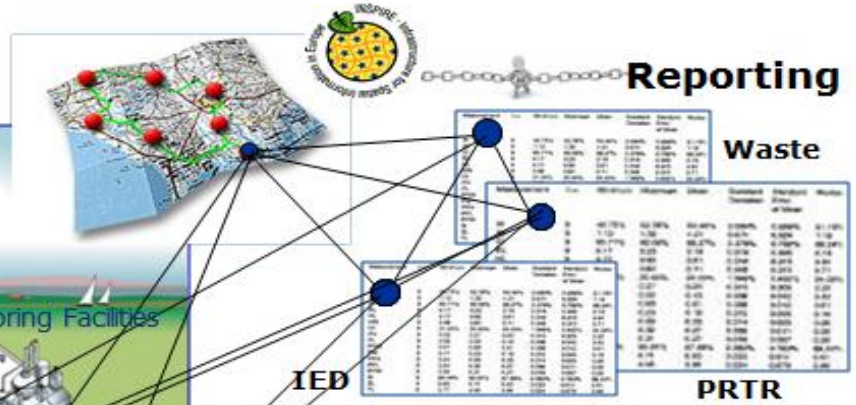
# Outlook

## Priorities 2016 – 2020 ?

### *Article premier*

1. La présente directive vise à fixer les règles générales destinées à établir l'infrastructure d'information géographique dans la Communauté européenne (ci-après dénommé «INSPIRE»), aux fins des politiques environnementales communautaires et des politiques ou des activités de la Communauté susceptibles d'avoir une incidence sur l'environnement.

# Identification of spatial data sets for reporting and implementation



- Urban Planning**
- Emission control**
- Water Management Plans**
- Environmental Impact Assessment**
- Risk Management**
- Citizens Information**
- Inspections**
- Permitting**
- Reporting**

# Focus reporting & implementation? Example UWWTD



Implementation and reporting under Articles 15 and 17 of UWWTD (91/271/EEC) - traitement des eaux urbaines résiduaires - include information on:

- **Planning** (e.g designation and establishment of sensitive areas)
- **Regulation** (e.g. agglomerations with more than 2000 population equivalent are supplied with collecting systems...)
- **Monitoring** (e.g parameters monitored from both discharges from urban wastewater treatment plants and receiving waters)
- **Information and reporting** (e.g. efficiency of treatment plants ...)

**Hardly any of these data sets can be found in the EU - GeoPortal!**



# UWWT Spatial data exists

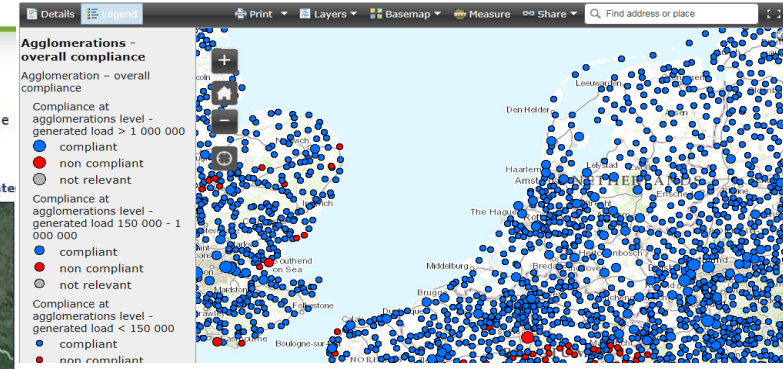


Search Europe's environment...  
Advanced search A-Z Glossary

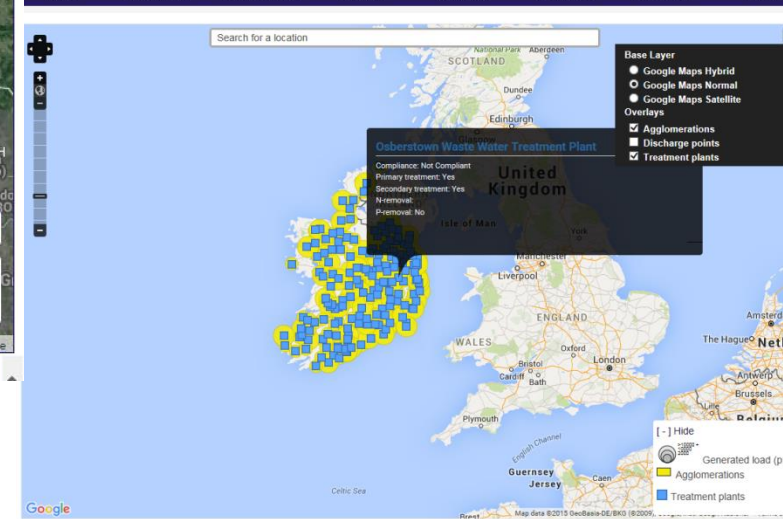
Topics Data and maps Indicators Publications Media About EEA The EEA is an agency of the European Union

## Urban Waste Water Treatment maps

The map reflects the most recent available information at the EU-level on implementation of the Urban Waste Water Treatment Directive (UWWTD) in EU 27 based on data reported by the Member States (for reference years 2011 or 2012) in 2013.



## UWWTD SIIF Ireland National Node

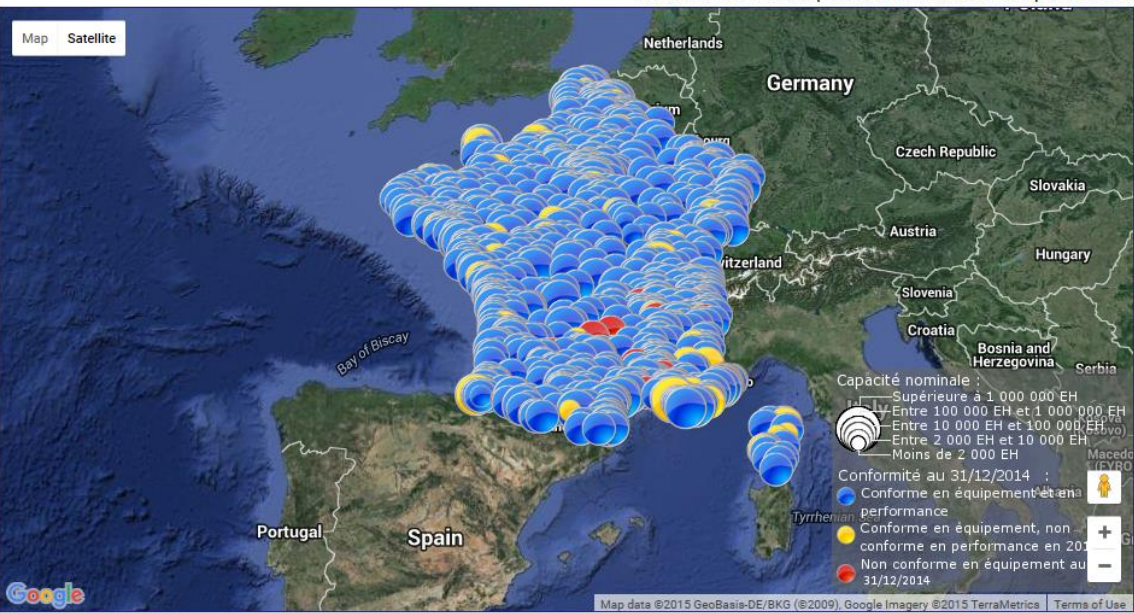


## MINISTÈRE DE L'ÉCOLOGIE, DU DÉVELOPPEMENT DURABLE ET DE L'ÉNERGIE

### Portail d'information sur l'assainissement communal

#### Situation au 31/12/2014 des stations de traitement des eaux usées

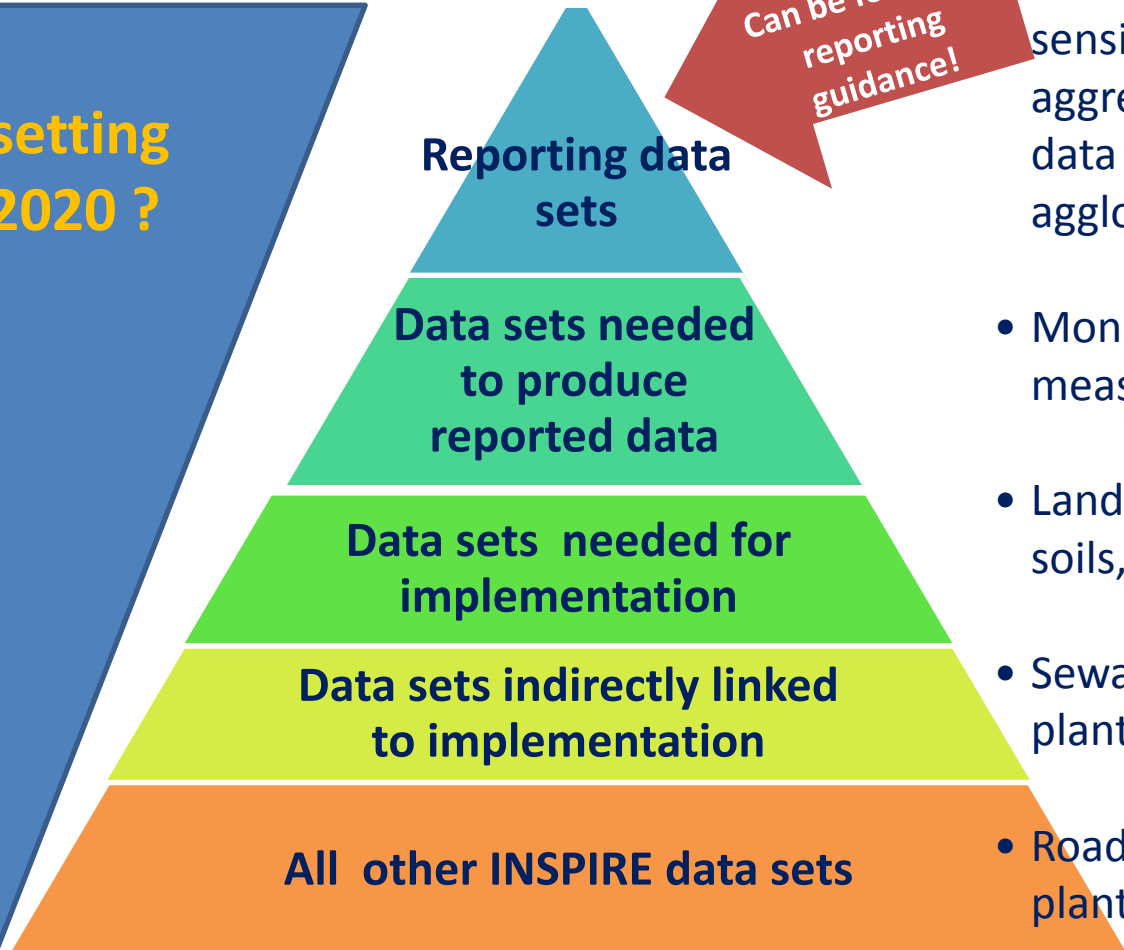
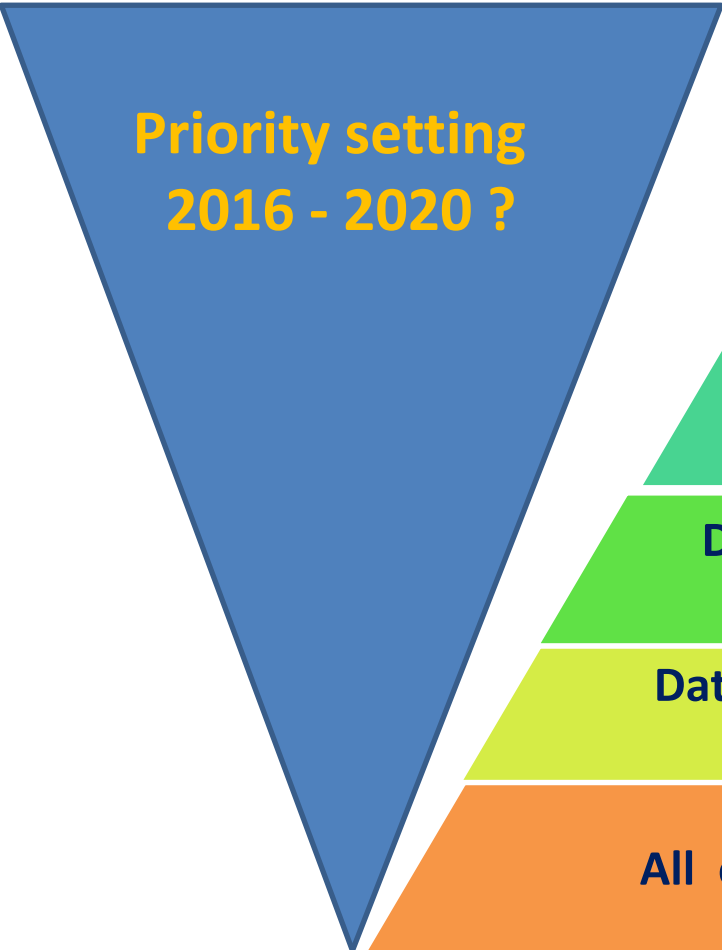
Rechercher  Toutes les stations de traitement  Stations de traitement non conforme  
 Masquer les données qualité des cours d'eau  DBO5  NO2  NH4  PO4



Bienvenue sur le portail d'informations sur l'assainissement communal !

#### Dernières actualités

# Focus reporting & implementation? Example UWWTD



Can be found in reporting guidance!

### Examples

- Location of UWWT plants, sensitive areas, aggregated monitoring data for all UWWTPs, agglomerations, ...
- Monitoring measurements, permits,...
- Land-use, protected sites, soils, water bodies...
- Sewage sludge disposal of plant
- Road network to UWWT plant

# INSPIRE implementation need for priority setting?



## FACTS

- **INSPIRE covers a wide variety of data sets (34 spatial data themes) supporting environment policy**
- **Analysis of the Member States monitoring reports and EU geo-portal shows: a considerable amount of spatial data required for reporting & implementation has not yet been brought online**
- **Deadline for harmonised data models 2017 (Annex I), 2020 (Annex II)**
- **Not everything can be done at the same time**

## NEED for EU LEVEL PRIORITY?

- **Benefits at EU level and cross-border will materialise if all MS focus on the same priorities?**
- **Focus closing gaps and next 5 year data harmonisation on EU level reporting and cross-border implementation of environmental legislation?**

## NEED for NATIONAL PRIORITIES?

- **Driven-by-demand (eGovernment etc.) ?**

# OUTLOOK



INSPIRE 2015



COMMISSION PRIORITY

**Digital Single Market**



INSPIRE 2020

