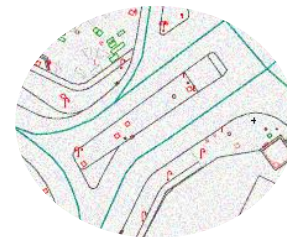




The French INSPIRE coordinating structure





A “VERY LARGE SCALE CORE STREET MAP” to prevent damages on underground pipelines during pipe-works

INSPIRE CONFERENCE, BARCELONA, 30TH OF SEPTEMBER 2016

Pascal LORY

Head of mission CNIG & INSPIRE at IGN France
Member of the board Afigeo and EUROGI Vice president

<http://cnig.fr/>

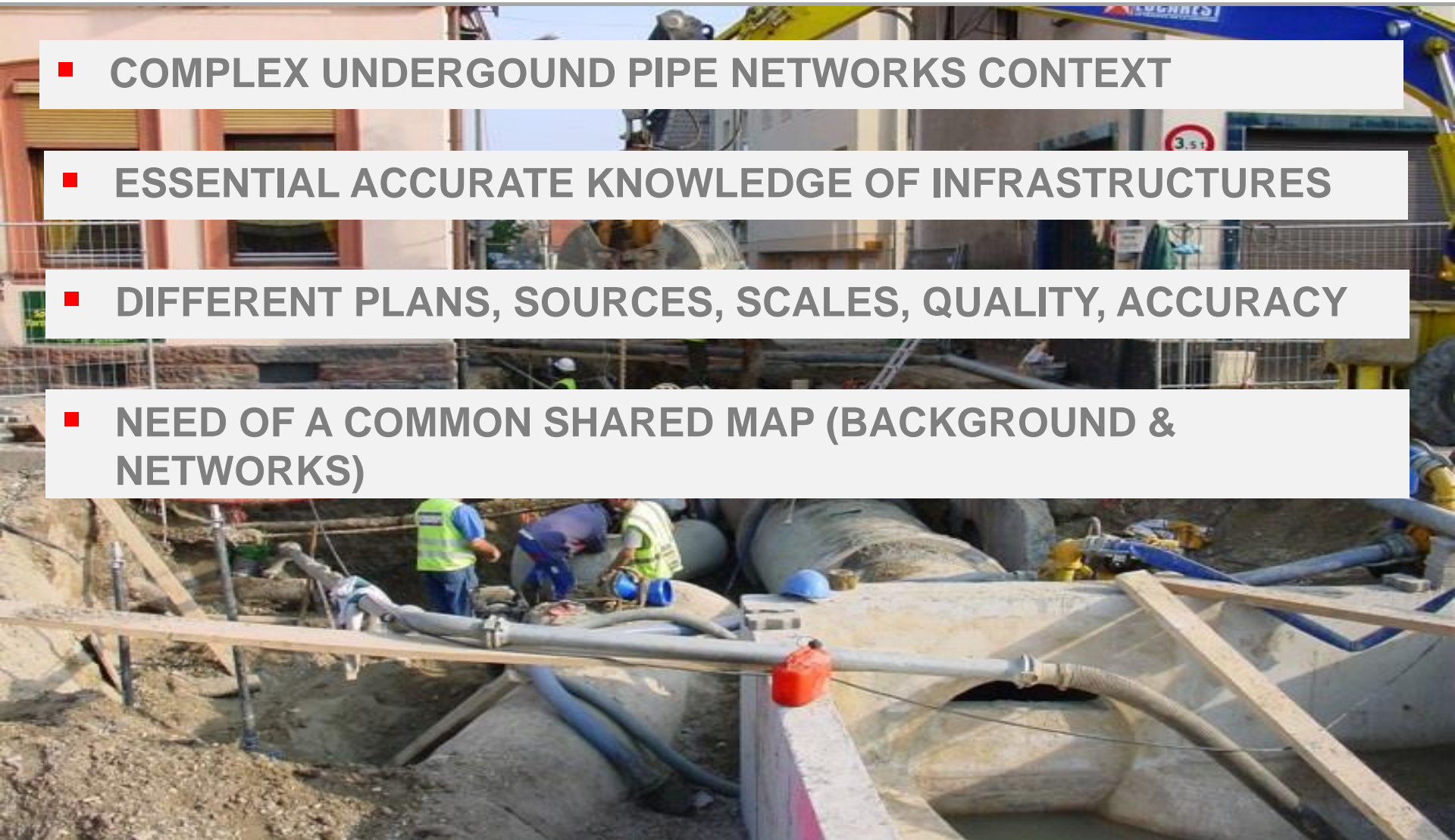
BACKGROUND

- GAS EXPLOSION LAFAYETTE AV. LYON 28th FEBRUARY 2008
- STRONG AWARENESS REGARDING SECURITY AROSE
- NEWS RULES TO PREVENT INJURIES AND DAMAGES IN 2012
- 5M PIPE-WORKS IN FRANCE EVERY YEAR
- DECREASE DAMAGES FROM 100.000 PER YEAR TO 65.000



STATE OF PLAY

- COMPLEX UNDERGROUND PIPE NETWORKS CONTEXT
- ESSENTIAL ACCURATE KNOWLEDGE OF INFRASTRUCTURES
- DIFFERENT PLANS, SOURCES, SCALES, QUALITY, ACCURACY
- NEED OF A COMMON SHARED MAP (BACKGROUND & NETWORKS)



SETTING UP NEW RULES

- JULY 2012 : NEW RULES CAME INTO FORCE
- NETWORKS OPERATORS COMMIT ON PIPES' LOCATION
- JANUARY 2019, URBAN AREAS: GAS, POWER NETWORKS PLANS, GEOREFERENCED WITH 40 CM UNCERTAINTY
- 2026 REQUIREMENTS APPLICABLE ON WHOLE FRANCE :
 - UPGRADE PREVIOUS DATA
 - ENHANCE QUALITY NEW DATA COLLECTED
- BACKGROUND MAP TO USE : “BEST VERY LARGE SCALE PLAN AVAILABLE”

CNIG : SUITABLE FRAMEWORK FOR A LONG PROCESS



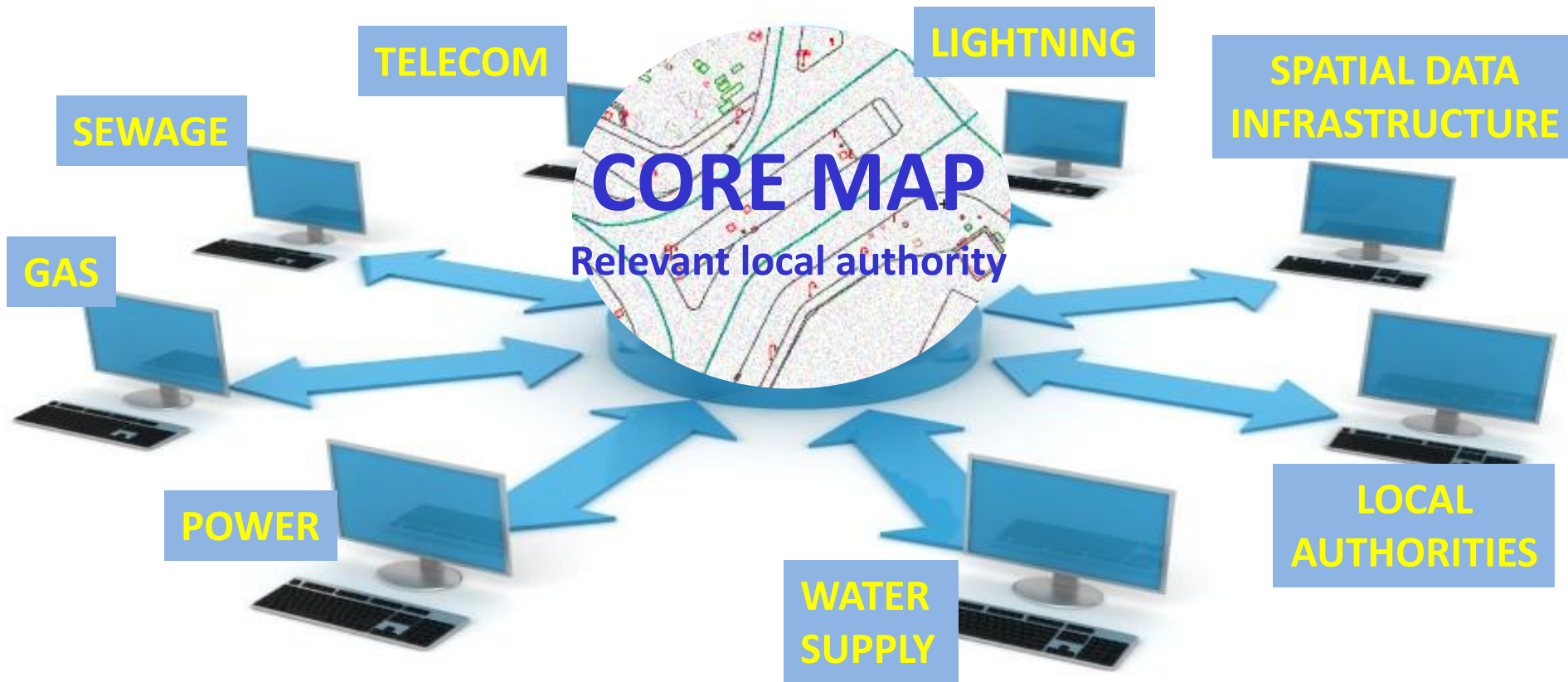
- CNIG : CREATED BY DECREE IN 2011, REPORTS TO MINISTER OF ENVIRONMENT
- COORDINATING STRUCTURE ACCORDING TO INSPIRE
- OPEN, TRANSPARENT, NEUTRAL FOR MULTILATERAL EXCHANGES
- DESIGNS GEO STANDARDS



CNIG : SUITABLE FRAMEWORK FOR A LONG PROCESS

- LIVELY EXCHANGES OF VIEW, DECEMBER 2013 - JUNE 2015
- CREATION OF WORKING GROUPS
- OBJECTIVE : DESIGN AND SHARE A COMMON BACKGROUND MAP
- MANY DIFFERENT STAKE-HOLDERS
- COMMON WILLINGNESS TO ACHIEVE, RULES AND ECONOMIC INTEREST
- CONSENSUS MODEL TO REPLICATE

VERY LARGE SCALE CORE STREET MAP



■ THE MANTRA IS : SHARE AND LOCATE

VERY LARGE SCALE CORE STREET MAP



- VERTICAL PROJECTION OF FRONTAGE BUILDINGS
- EDGES OF THE PAVEMENTS
- VISIBLE NETWORKS' INFRASTRUCTURES (MANHOLE COVERS)
- ADDRESSES
- VERY HIGH ACCURACY : 10CM, UNCERTAINTY : 40CM
- COMPLIANT INSPIRE



24TH JUNE : SIGNATURE OF NATIONAL AGREEMENT

- **POLITICAL LEVEL AGREEMENT**
- **AT A LOCAL LEVEL:**
 - **CREATE CONDITIONS FOR LOCAL AGREEMENTS**
 - **APPLY THE GEO STANDARD**
 - **MAINTAIN UPTO DATE THE LOCAL CORE STREET MAP**
- **AT A NATIONAL LEVEL:**
 - **SET UP AN OBSERVATORY OF THE IMPLEMENTATION**
 - **MAINTAIN THE GEO STANDARD**
 - **CREATE CONDITIONS OF A NATIONAL DATA AGGREGATION**
 - **DISSEMINATE DATA THROUGH “SINGLE PORTAL”**

CORE STREET MAP MANDATORY



- RULES 2012 : “BEST VERY LARGE SCALE PLAN AVAILABLE”
- NEW BYLAW PUBLISHED DECEMBER 22TH 2015
- COMPLIANT WITH CNIG STANDARD “VERY LARGE SCALE CORE STREET MAP”
- “VERY LARGE SCALE CORE STREET MAP” NOW MANDATORY
- STANDARDIZATION WORK HAS BEEN ACKNOWLEDGED BY THE STATE
- LET US PRODUCE IT NOW!



The French INSPIRE coordinating structure

INFORMATION (IN FRENCH):
[HTTP://CNIG.GOUV.FR](http://cnig.gouv.fr)

**THANKS FOR
YOUR
ATTENTION**