

zones de divergences sur la Ligne Frontière franco-espagnole 31-08-66

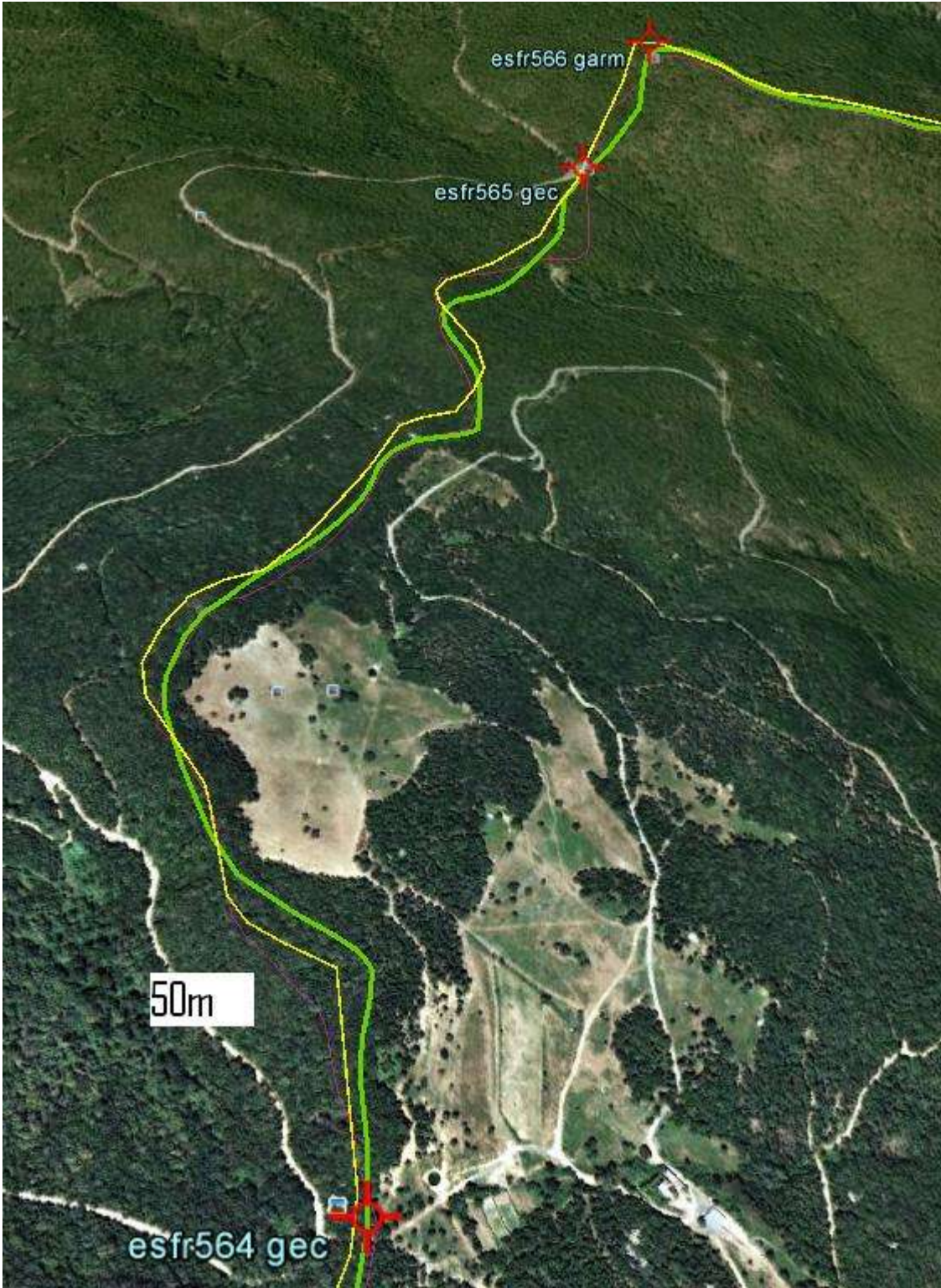
Comparaisons des lignes issues des restitutions

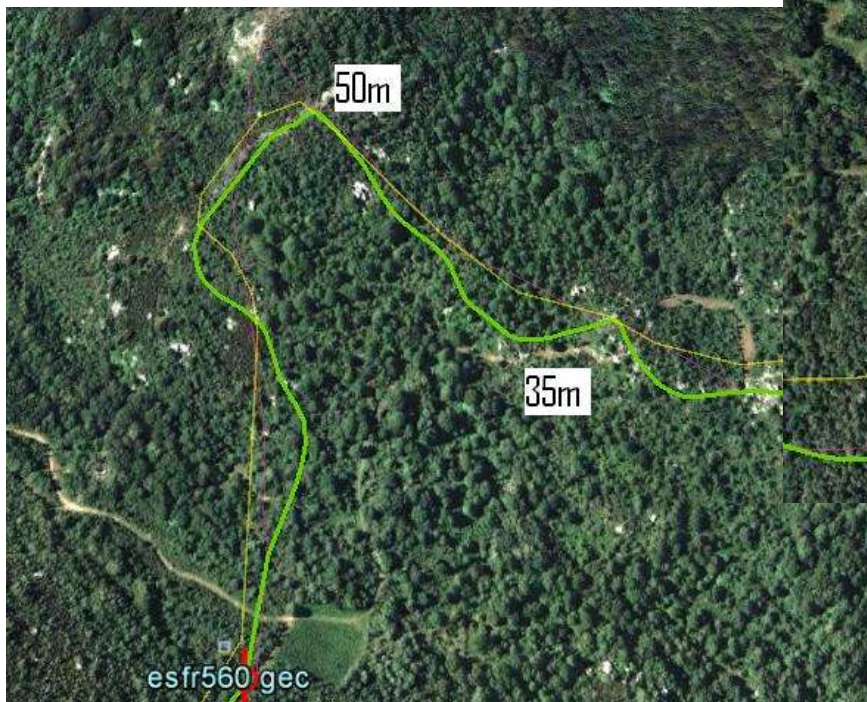
150 m <	5	<300m
100 m <	3	<150m
50 m <	20	<100m
25 m <	20	<50m

A Llivia, la ligne espagnole est plus récente et
fera foi sauf sur le point 22

Légende

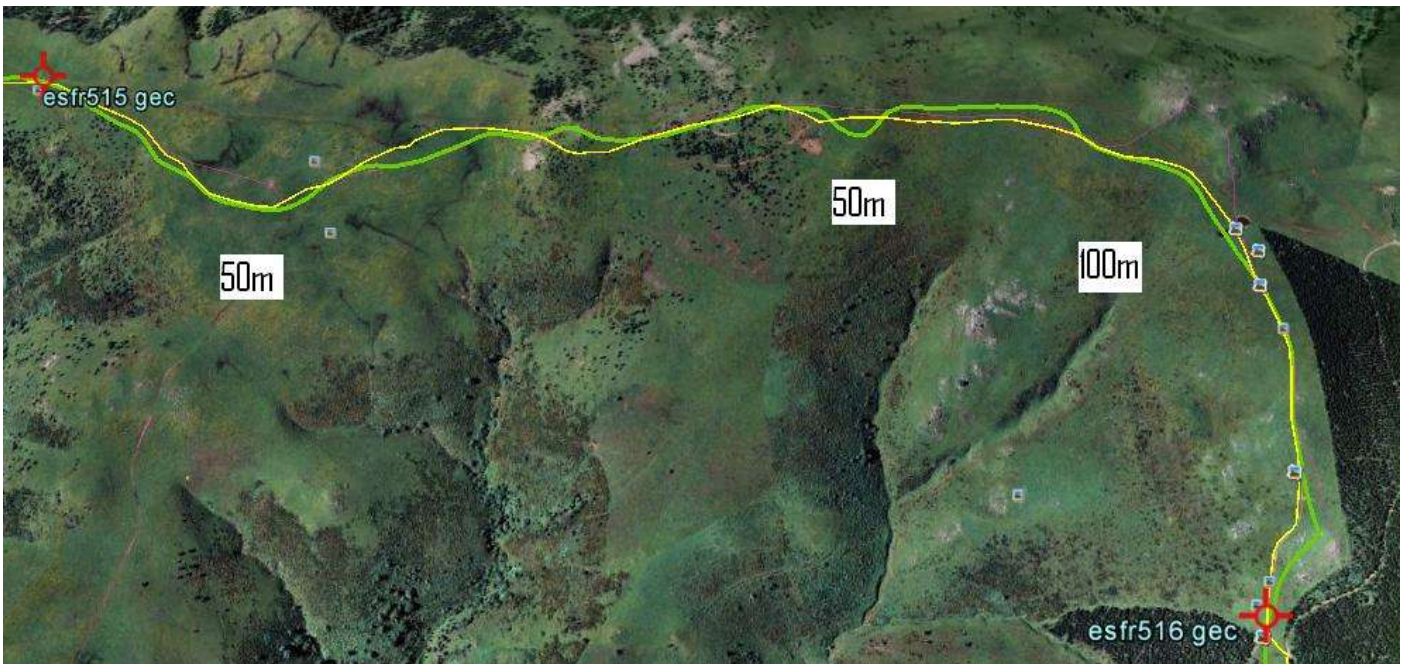
Ligne française	
Ligne espagnole	
Ancienne ligne française	



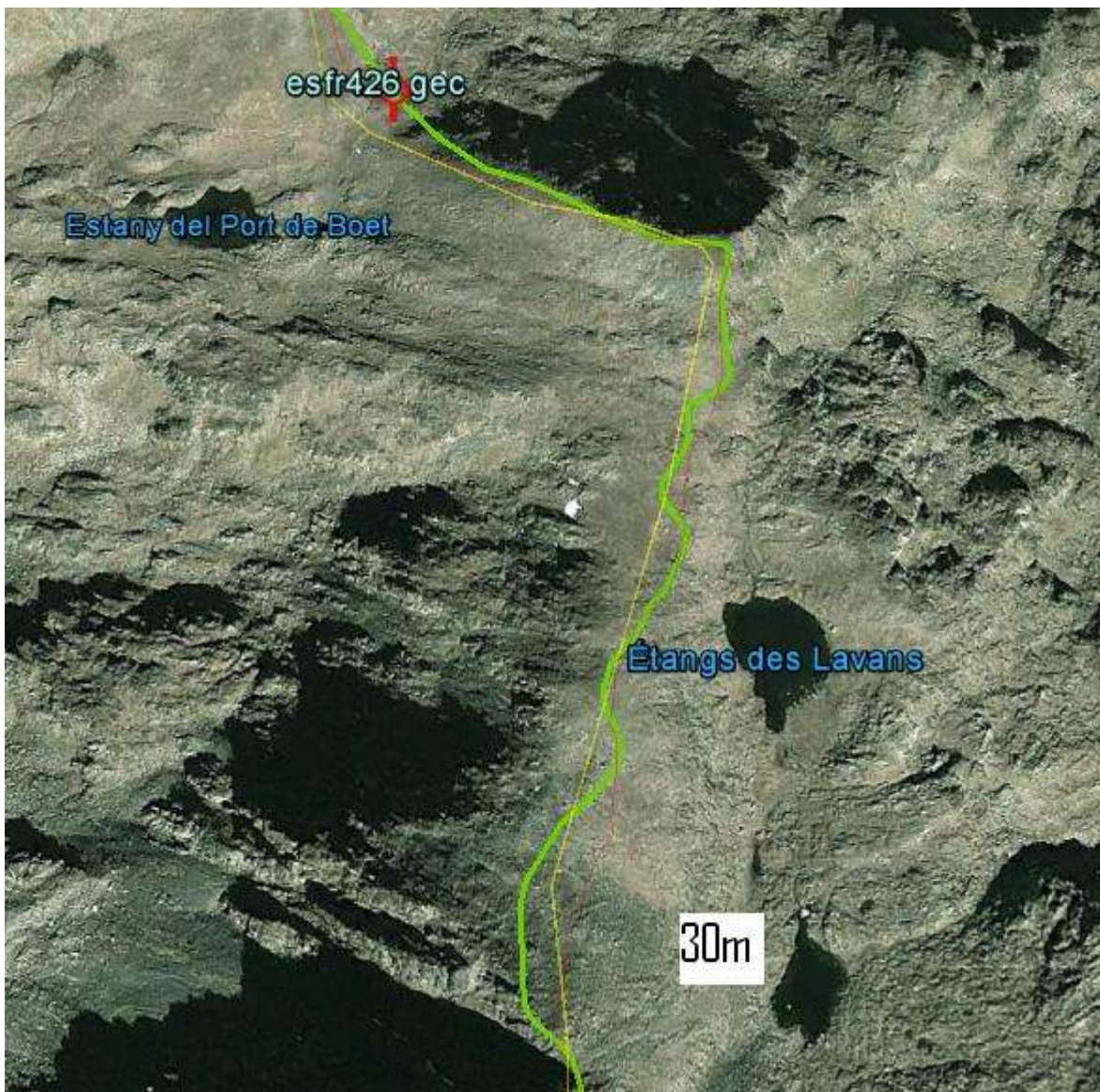


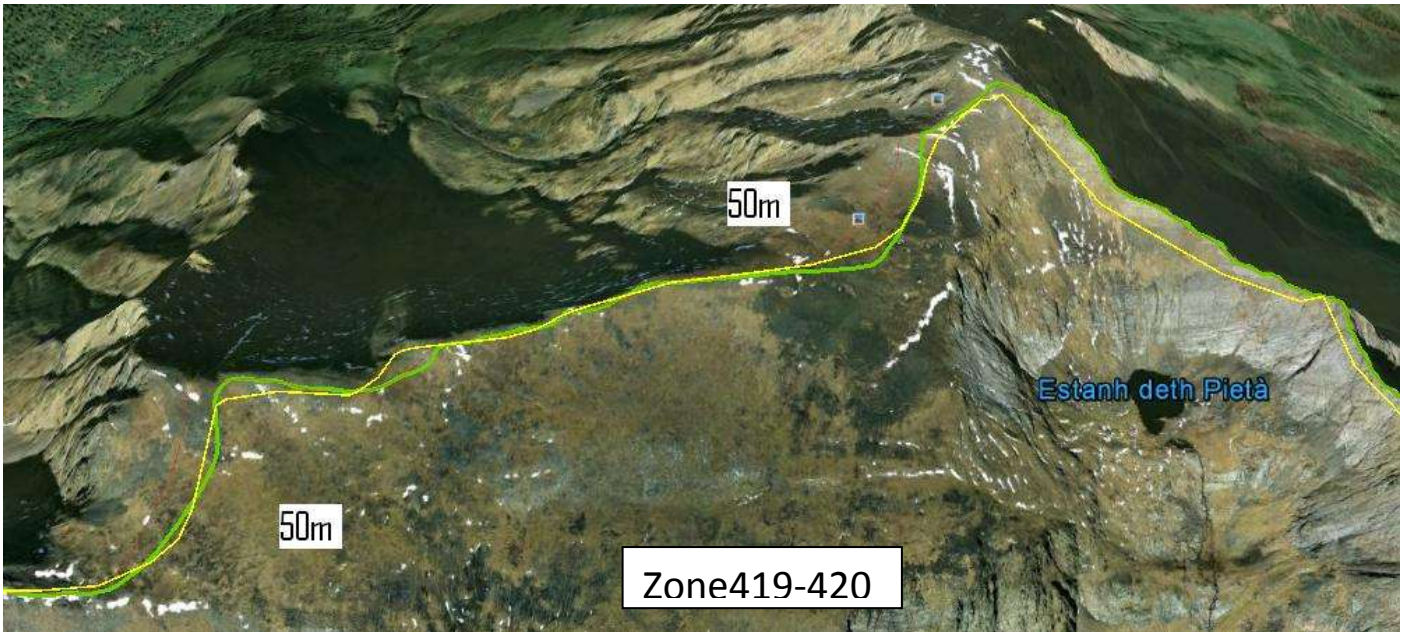
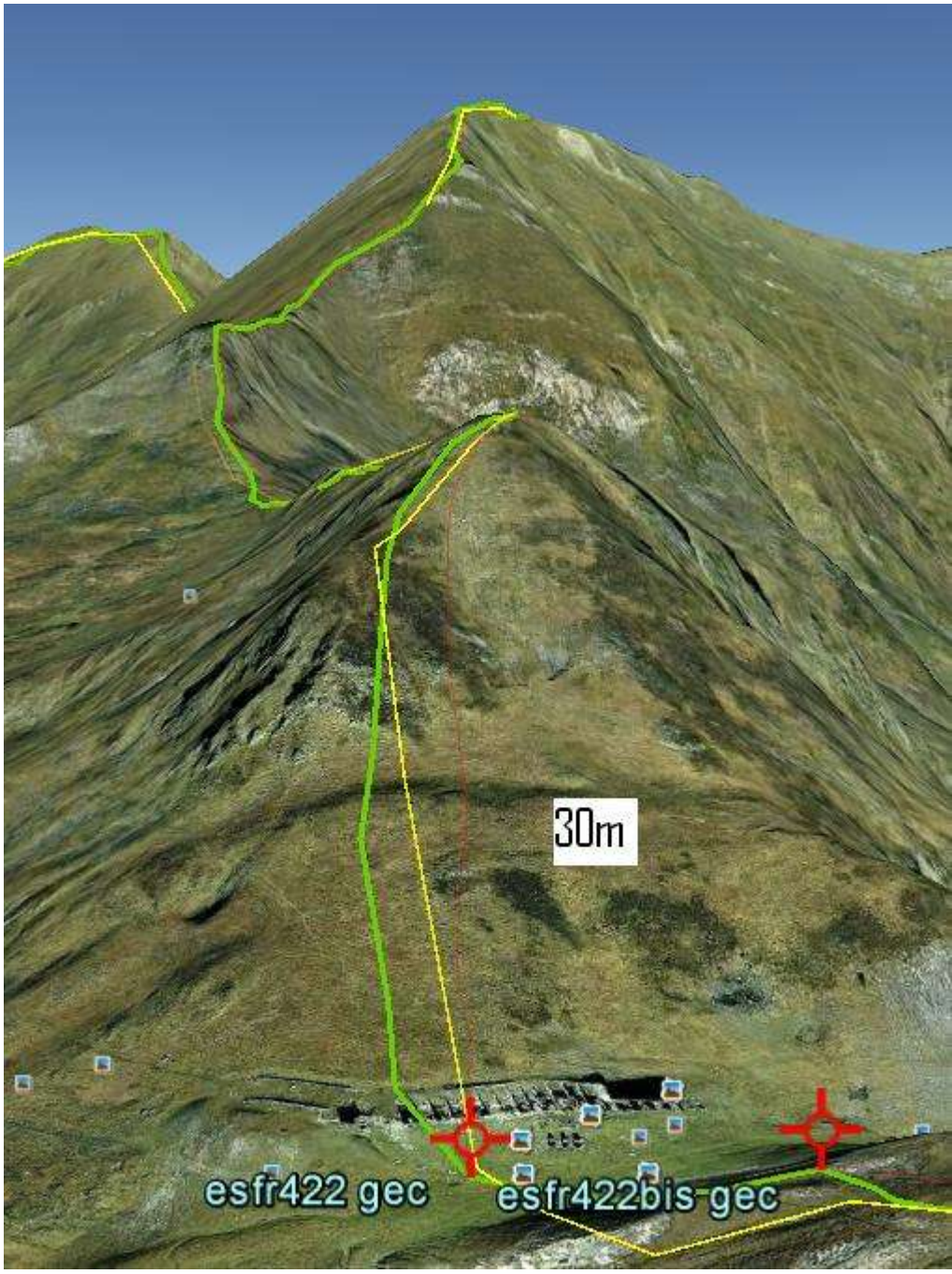




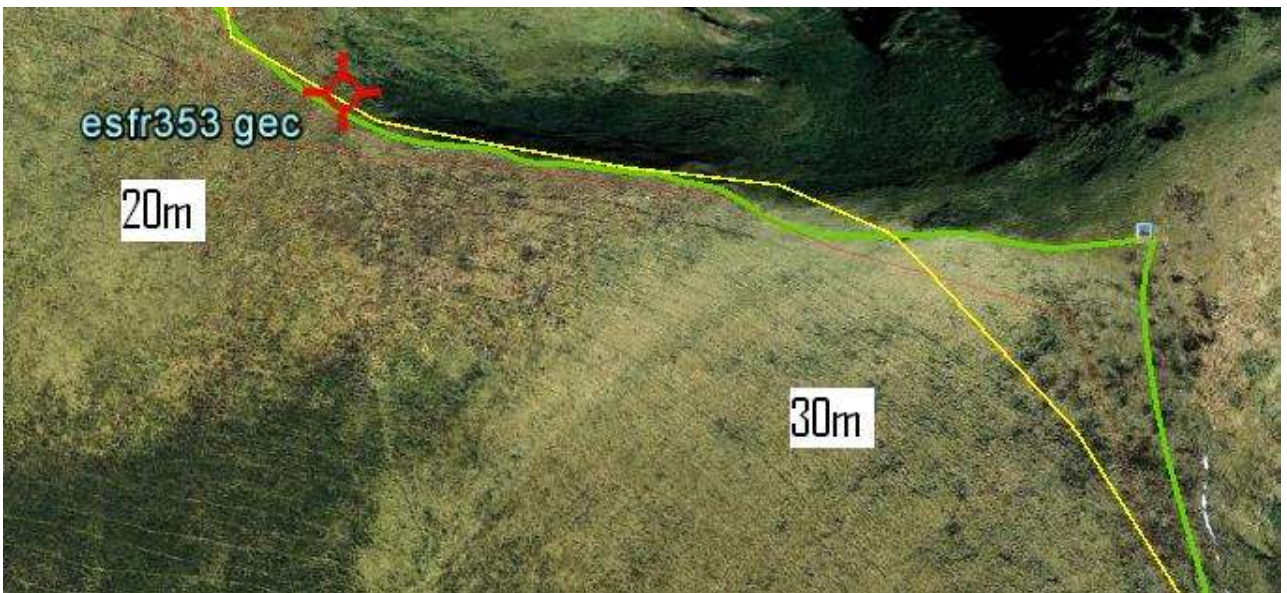
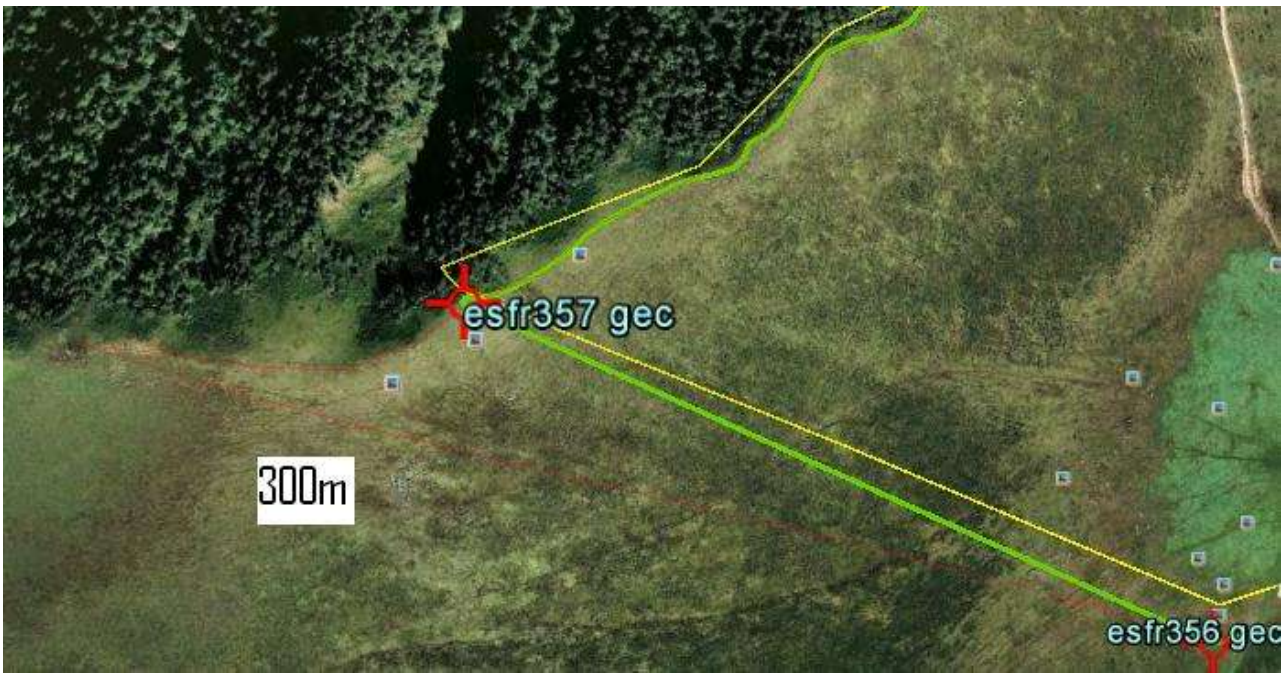




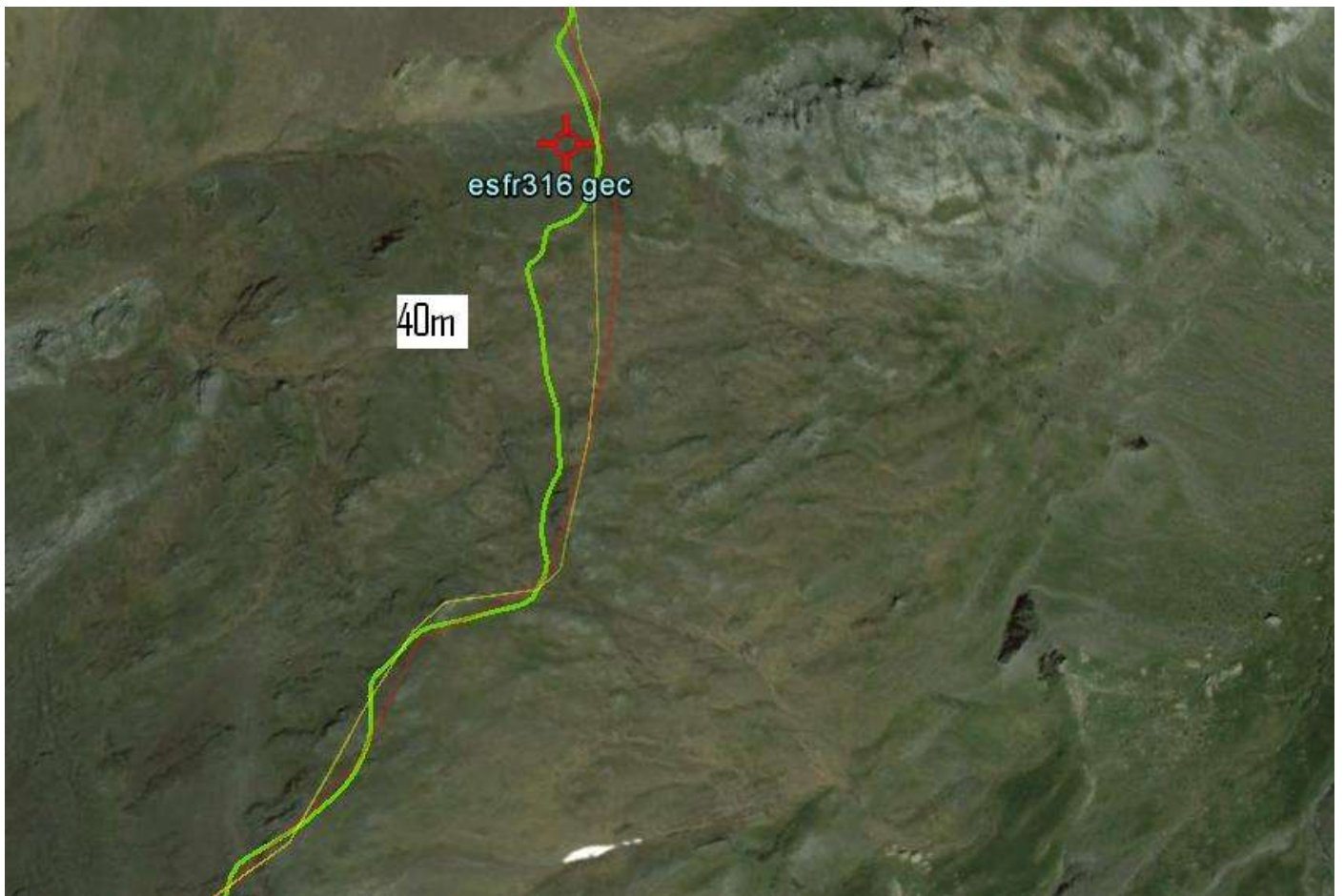














Pas d'accord
Ancienne carrière espagnole sur la ligne de partage des eaux
détruite à cet endroit





